

NITE-CHRIP

Chemical Risk Information Platform



Chemical Risk Information Platform (NITE-CHRIP)

NITE-CHRIP has become a database enabling one-stop management of chemical substances is possible.

You can search for information on laws and regulations concerning chemicals in Japan and overseas as well as hazard information on chemicals free of charge. It also provides links to websites for laws and regulations concerning chemicals and for hazard examination and application.

- Overviews of laws and regulations in Japan and abroad and hazard information and links to websites for statutory applications are now provided.
- The Search Options feature, for search with detailed conditions, now supports search with structure images and search with SMILES text strings.
- The search results screen is now displayed in user-friendly colors.

Feel free to use the new NITE-CHRIP.

http://www.nite.go.jp/en/chem/chrip/chrip_search/systemTop

In addition to the features stated on the cover, NITE-CHRIP also offers the following.

- Highly reliable regulatory information on chemical substances published by national and/or international authorities is posted.
- Information is updated every two months. Regular investigation and updates are performed promptly in response to additions or other amendments related to the regulated substances.
- Information on about 260,000 substances can be searched for with CAS RN, MITI number, name etc.
- A specific search with certain conditions including a forward search with a wild card, NOT search and OR search is also available.
- The language of the site can be switched (between Japanese and English) on the search result page or list page.

Search function of NITE-CHRIP

■ Search menu (top page)

Total Search System for Chemical Substances

The current 1 users have been using this site.

Search by chemical

You can search the comprehensive information on a target chemical substance by entering its number, name, molecular formula or structure. Information is hazardous property/ hazard assessments or regulations, etc.

Search keywords are as follows

- Chemical Substance Name
- CAS Registry Number
- MITI number
- ISHA number

Search within laws/regulations, etc.

You can search chemical substances regulated by laws and assessed by organizations, etc. Besides, outlines of individual laws and regulations will be displayed with related materials (ex. application website, supplementary information etc.) .

Search lists are as follows

- Laws and Regulations in Japan
- Laws and Regulations in Other countries
- Chemical Hazard and Risk Information
- Test Data and Reports

Select between "Search by Chemical" and "Search within laws/regulations, etc."

General Search/Search Options

Select Laws or Regulations

Three methods of searching are selectable as follows:

- **General Search:** Simplified search by using the number or name of a substance.
- **Search Options:** Specific search with a keyword including a wild card, structural formula or molecular formula.
- **Select Laws or Regulations:** Overviews of laws and regulations in Japan and abroad and hazard information and links to websites for statutory applications are displayed at a glance. Lists of substances are displayed separately regarding individual sources of information.

■ General Search

Keyword A substance can be searched for with the numbers (CAS RN, MITI Number, ISHL Number, EC Number, UN number, CHRIP_ID and Nikkaji Number) or the name of a chemical substance.

General Search Search Options

<Keyword>

Search by Number CAS No. Exact Match

Search by Name (Multiple keywords separated by a space.) All Partial Match

Search by Molecular Formula Exact Match

<Display Setting>

Interim Search Results No

Display of Structures No

Display 100 results

Search Results Display
 Including blank data. Excluding blank data.

Search Clear All

Search by category

This menu is used to filter by information source by entering a check in a check box.

If you input your keyword in the <Keyword> field and enter a check in the <Search by category>, then any substance which satisfies both conditions will be searched for. If you enter checks in more than one information source, substances which fall under either of the information sources will be searched for.

※The search result can be downloaded.

※Whether or not other laws and regulations apply may also be displayed.

Search Options

Keyword search In keyword search in Search Options, you can use a wild card (*, ?) to search by number or name. By using a wild card, various searches are available such as a forward search and backward search.

If you do not use a wild card, the search will be an exact match search.

If you search with a name including a space, input the name by putting double quotation marks at the beginning and the end of the name.

Search by structural formula

You can use SMILES or a structure file (MOL format) for the search. Partial match, Exact match or Similarity can be selected. Search with molecular weight is also available.

Search by structure images and search by SMILES text strings are now available.

<Search by Structure>

SMILES

Draw A Structural Formula

Obtain SMILES From Structural Formula

Structure File

MOL(.mol)

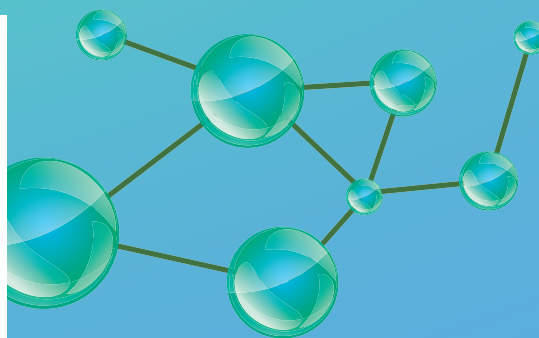
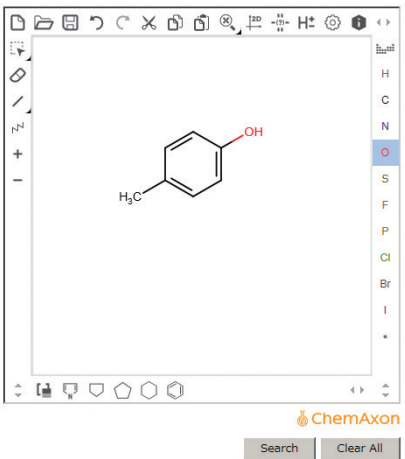
参照... Load

Partial Match

Exact Match

Similarity 50 %

Molecular Weight ~

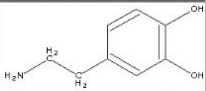
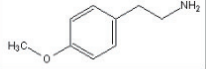
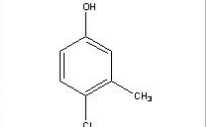


Downloading the search results

Add other laws and regulations etc

<<Previous Page 1-100 /927 Next Page>>

100 results / page

No.	CHRIP_ID	CAS RN	Chemical Substance Name	Structure
1	C007-559-24A	51-61-6	Dopamine	
2	C006-324-88A	55-81-2	2-(4-Methoxyphenyl)ethanamine	
3	C004-672-14A	59-50-7	4-Chloro-3-methylphenol	

Choose Laws or Regulations

Click on the laws or regulations or the hazard information you wish to view, and the overview, links to websites for statutory applications and a list of substances will be displayed.

Click the name of list you would like to see

Laws and Regulations in Japan	Affiliated ministries etc.
Act on the Evaluation of Chemical Substances and Regulation of Their Manufacture, etc. (Chemical Substances Control Law ; CSCL)	METI, MHLW, MOE
Outline of the Regulation	
To prevent environmental pollution caused by persistent chemical substances that pose a risk of impairing human health or interfering with the inhabitation and/or growth of flora and fauna, a preliminary evaluation of new chemical substances and notification of the quantity of manufacture or import of chemical substances after marketing are required. Regulations with respect to the manufacture, import permission, usage restrictions, etc., are carried out with due consideration to the properties of the chemical substance.	
Related Material	
Act Outline Application for low volume new chemical substances (in Japanese) Application for new chemical substances (in Japanese) Procedure for New Chemicals Import Clearance Procedures Notification of the Manufacturing Amount, etc. (in Japanese) Notification of the Manufacturing Amount, etc. Operation Notification	
Chemical List	Data Description
Japan CSCL: Class I Specified Chemical Substances	Data Description
Japan CSCL: Class II Specified Chemical Substances	Data Description
Japan CSCL: Monitoring Chemical Substances	Data Description
Japan CSCL: Priority Assessment Chemical Substances	Data Description
Japan CSCL: Newly Announced Chemical Substances (notified on and after April 1, 2011)	Data Description
Japan CSCL: Newly Announced Chemical Substances (notified by March 31, 2011)	Data Description
Japan CSCL: Existing Chemical Substances	Data Description
Japan CSCL: Type II Monitoring Chemical Substances (before amendment)	Data Description
Japan CSCL: Type III Monitoring Chemical Substances (before amendment)	Data Description
Japan CSCL: Chemical Substances exempted from notification of manufacturing/import amount	Data Description
Japan METI: Biodegradation and Bioconcentration Results	Data Description
Japan MHLW: Toxicity Test Results	Data Description
Japan MOE: Results of Eco-toxicity tests of chemicals	Data Description
Act on Confirmation, etc. of Release Amounts of Specific Chemical Substances in the Environment and Promotion of Improvements to the Management Thereof	METI, MOE
Industrial Safety and Health Act (ISHA)	MHLW
Poisonous and Deleterious Substances Control Act	MHLW

Information shown

General Information	CHRIP ID, CAS RN
	Chemical Substance Name, Synonym
	Molecular formula, Molecular weight, SMILES, Structure
	Information of Japan Chemical Substance Dictionary (Nikkaji)
Laws and Regulations in Japan	Act on the Evaluation of Chemical Substances and Regulation of Their Manufacture, etc. (Chemical Substances Control Law ; CSCL)
	Act on Confirmation, etc. of Release Amounts of Specific Chemical Substances in the Environment and Promotion of Improvements to the Management Thereof
	Industrial Safety and Health Act (ISHA)
	Poisonous and Deleterious Substances Control Act
	Act on the Prohibition of Chemical Weapons and the Control, etc. of Specific Chemicals (Chemical Weapons Prohibition Law)
	Act on the Protection of the Ozone Layer through the Control of Specified Substances and Other Measures
	Air Pollution Control Law
	Water Pollution Control Law
	Soil Contamination Countermeasures Act
	Law for the Control of Household Products Containing Harmful Substances
	Fire Service Act (Only outline and related material)
	Foreign Exchange and Foreign Trade Act (Only outline and related material)
Laws and Regulations in Other countries	UN Number and UN Hazard Class
	Stockholm Convention on Persistent Organic Pollutants (POPs)
	Rotterdam Convention on the Prior Informed Consent Procedure for Certain Hazardous Chemicals and Pesticides in International Trade (PIC)
	The ASEAN-Japan Chemical Safety Database (AJCSD): Laws and Regulations
	EC Inventory/REACH: Substances of Very High Concern for Authorization (SVHC)/CLP Harmonised Classification
	TSCA: Inventory / Significant New Use Rule (SNUR) / Regulation of hazardous chemical substances and mixtures
	China: Catalogue of Hazardous Chemicals (2015)
	Korea: Act on the Registration and Evaluation, etc. of Chemical Substances (ARECs)/Chemicals Control Act (CCA)
	Taiwan TSCA: Toxic Chemicals
Chemical Hazard and Risk Information	GHS Classification Results by the Japanese Government/AJCSD:GHS Classification Results
	Relational Information System for Chemical Accidents Database (RISCAD)
	Chemical Substances Hazard Assessment Report / Initial Risk Assessment Report
	Hazard Data Sheet for Chemical Substances
	ISHA: Risk Assessment Report
	ISHA: Examples of Occupational Accidents Caused by Chemical Substances
	CSCL: The Japan HPV Challenge Program
	OECD: High Production Volume (HPV) Chemicals
	International Chemical Safety Cards (ICSC)
	Concise International Chemical Assessment Documents (CICADs)
	Environmental Health Criteria (EHC)
	US Agency for Toxic Substances and Disease Registry (ATSDR): Toxicological Profiles
	US EPA: Integrated Risk Information System (IRIS)
	EU: Risk Assessment Reports (RAR)
	Advisory Committee on Existing Chemicals (BUA) Reports by the German Chemical Society
	Canada: Priority Substances List (PSL)
	Australia: Priority Existing Chemicals (PEC) Assessment Reports
	Japan Society for Occupational Health (JSOH): Occupational Exposure Limits / Occupational Exposure Limits Based on Biological Monitoring / Occupational Carcinogens / Occupational Sensitizers / Reproductive Toxicants
	IARC: Carcinogenicity Assessment
	US EPA: Carcinogenicity Assessment
US NTP: Carcinogenicity Assessment	
ICCA Safety Summary of Japan (JCIA BIGDr)	
Test Data and Reports	Japan METI: Biodegradation and Bioconcentration Results
	Japan MHLW: Toxicity Test Results
	Japan MOE: Results of Eco-toxicity tests of chemicals
	ISHA: Carcinogenicity Test Results for Chemical Substances
	ISHA: Mutagenicity Test Results for Chemical Substances
	Japan METI: Safety Test
	NITE: Toxicity and Eco-toxicity Test Results
	US National Toxicology Program (NTP) : Long-Term Study Reports & Abstracts

■ Contact for matters related to this leaflet

Data Analysis Division, Chemical Management Center National Institute of Technology and Evaluation

2-49-10, Nishihara, Shibuya-ku Tokyo 151-0066, Japan
Tel: +81-3-3481-1999 Fax: +81-3-3481-2900 E-mail: chem_information@nite.go.jp



nite National Institute of Technology and Evaluation
Chemical Management Field

Ver.3 2019.03